

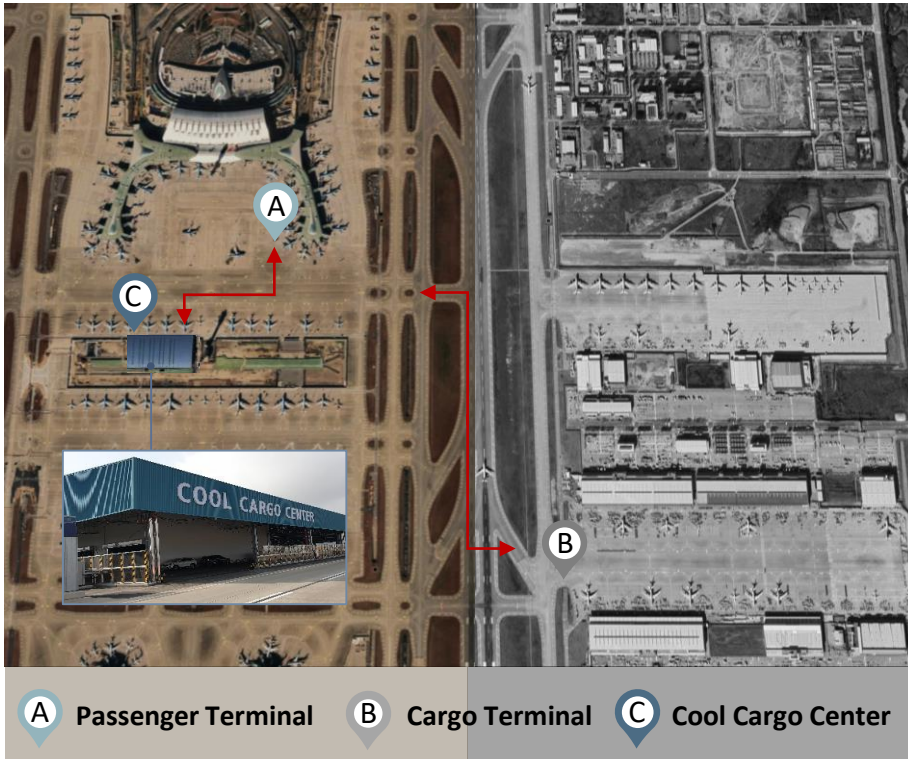
# Korean Air

---

## + New Incheon Cool Cargo Center



**On Service**  
Sep 1<sup>st</sup> 2021



- Protection from inclement weather
- Optimal temperature during storage
- Minimum movement of cargo

**➔ New Cargo Terminal within 5 min distance from Passenger Terminal**



### Agile

- Shorter cargo transfer time
  - ◇ Passenger Terminal 2 ↔ CCC 1.5km, 5min
- One-stop ground handling service



### Secured

- Minimize exposure to inclement weather
  - ◇ Canopy and Storages accommodate 311 dollies
- Storage of temperature sensitive cargo
  - ◇ cool/warm room, freezer, fixed temperature room

# Korean Air

## + New

# Incheon Cool Cargo Center



**On Service**  
Sep 1<sup>st</sup> 2021



📍 Located on the West of Passenger Terminal 2 control tower



### ***Closer and faster***

- Passenger Terminal ↔ CCC 1.5km, 5min
- Accommodation of larger volume of cargo by curtailing MCT(Min Connection time)
- Swift build-up/breakdown of transit cargo



### ***Sensitive Handling***

- Management of cold chain during transport and storage
- All cargo protected against inclement weather
- Surveillance camera running 24/7 and guards on watch
- Special cargo handling agent, screeners in place



### ***Enlarged Capacity***

- Gross floor area 18,067m<sup>2</sup>
- Temp-controlled room 2,533m<sup>2</sup>
  - Accommodation of 45 ULD at a time
  - Drive-through operation
  - Temperature range of -18~25°C
- Fully equipped with equipment and experienced staffs