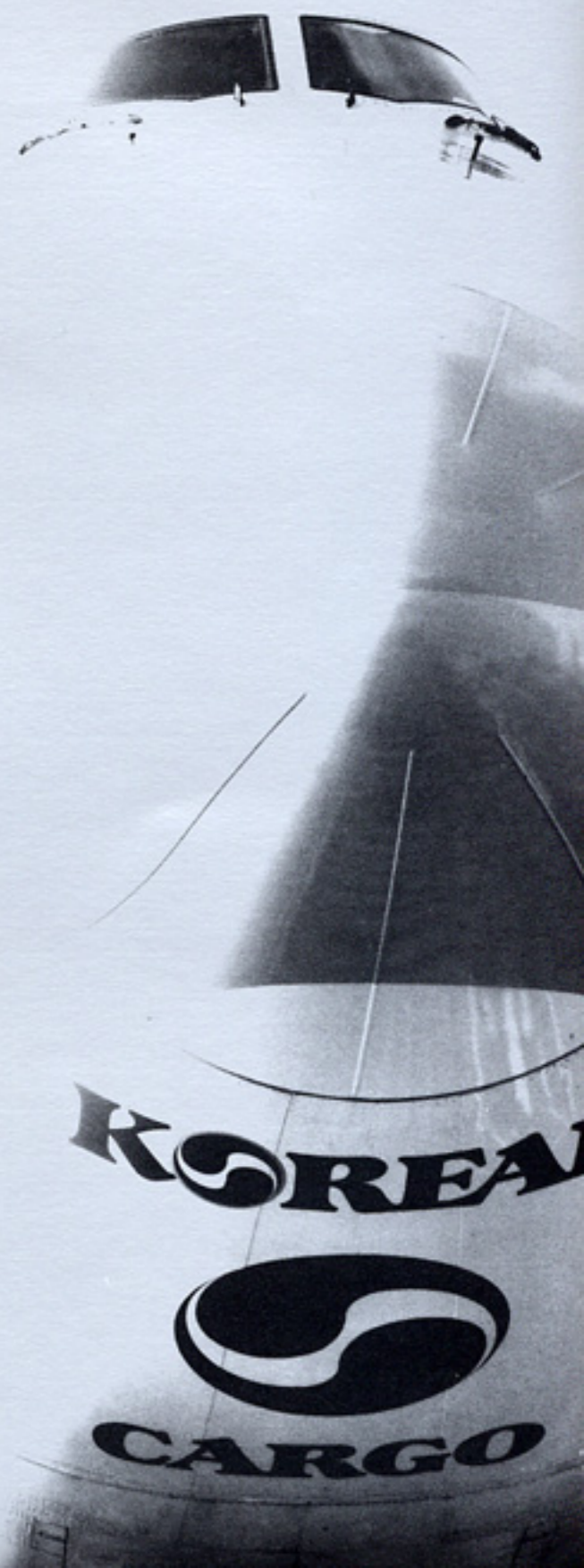


KOREAN AIR CARGO

1370, Ganghang-dong, Gangseo-gu, Seoul, Korea
Tel: 82 2 850 7114, Fax: 82 2 856 5900
cargo.koreanair.com

Korean Air Cargo

Korea



C o n t e n t s



4 | **Human Facts**



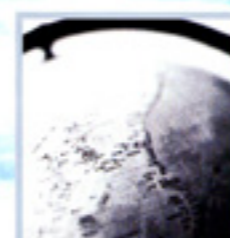
6 | **Cargo Fleet**



8 | **Warehouse**



10 | **Product I**
Equation & KAL-XAG



12 | **Product II**
Sky-Bridge



14 | **IT Service**



16 | **ULD Table**



18 | **Network**



20 | **Cargo Office Directory**

Our vision is to create together with you, our global stakeholders, the most innovative and individualized logistics solutions for world trade and commerce. As an industry leader, Korean Air Cargo will constantly look to the future and continuously seek new ways to add the greatest possible value to the countries, communities and customers we serve, as well as the individual lives our business activities touch.



We are specialized, experienced and dedicated cargo professionals.

We are a partner to your success

Korean Air Cargo has been ranked the world's second largest carrier for five consecutive years from 1996 to 2000 in terms of flown-cargo tonne/kilometers, according to IATA. These outstanding achievements have been made possible, thanks to our customers' continued patronage as well as the professionalism of our dedicated cargo staff. Korean Air Cargo's reliable service comes from its more than 30 years of experience in a variety of cargo operations.



Sales Representative



Service Counter Agent



Reservation Agent



Warehouse Supervisor



Load Master

We have 20 freighters - eight B747-400Fs, one B747-300F, seven B747-200Fs and four MD11Fs. We also have more than 90 passenger aircraft.

One of the Largest 747 Freighter Operators

With wide-bodied freighters, Korean Air Cargo can offer the most extensive range of services to customers - huge capacity as well as specialized service in: heavy cargo, oversized cargo, live animals, dangerous goods prohibited on passenger aircraft, highly sensitive items, and more. Plus, Korean Air Cargo, on a long-term basis plan to modernize its fleet by upgrading and simplifying it into all B747-400 freighters, which will enable it to be the most reliable cargo carrier in terms of punctuality, safety and capacity.



B747-400F ▶ 8



B747-300F & B747-200F ▶ 8



MD11F ▶ 4



Since the ground handling service mainly determines the quality of air cargo operations, it is deemed essential for us to operate our own exclusive cargo terminals in support of it.

Dedicated Cargo Terminals for Better Service



Incheon International Airport near Seoul

Korean Air Cargo operates dedicated cargo terminals at Seoul, Busan, Jeju in Korea, and at Los Angeles, New York, Toronto, Chicago, Tokyo, Osaka and Frankfurt overseas. From these warehouses, Korean Air Cargo provides specialized services, using state-of-the-art facilities and equipment.

Recently, Korean Air Cargo has invested in construction of new warehouses in Incheon and New York. The new Incheon airport in Korea opened in March 2001. Korean Air Cargo's handling capacity at Incheon reaches 800,000 tons per year, and will be expanded to one million tons in 2003 with added facilities. New York's new cargo terminal opened in October 2000, through which we expect to meet the growing demand on the US eastern seaboard.



Incheon Cargo Terminal

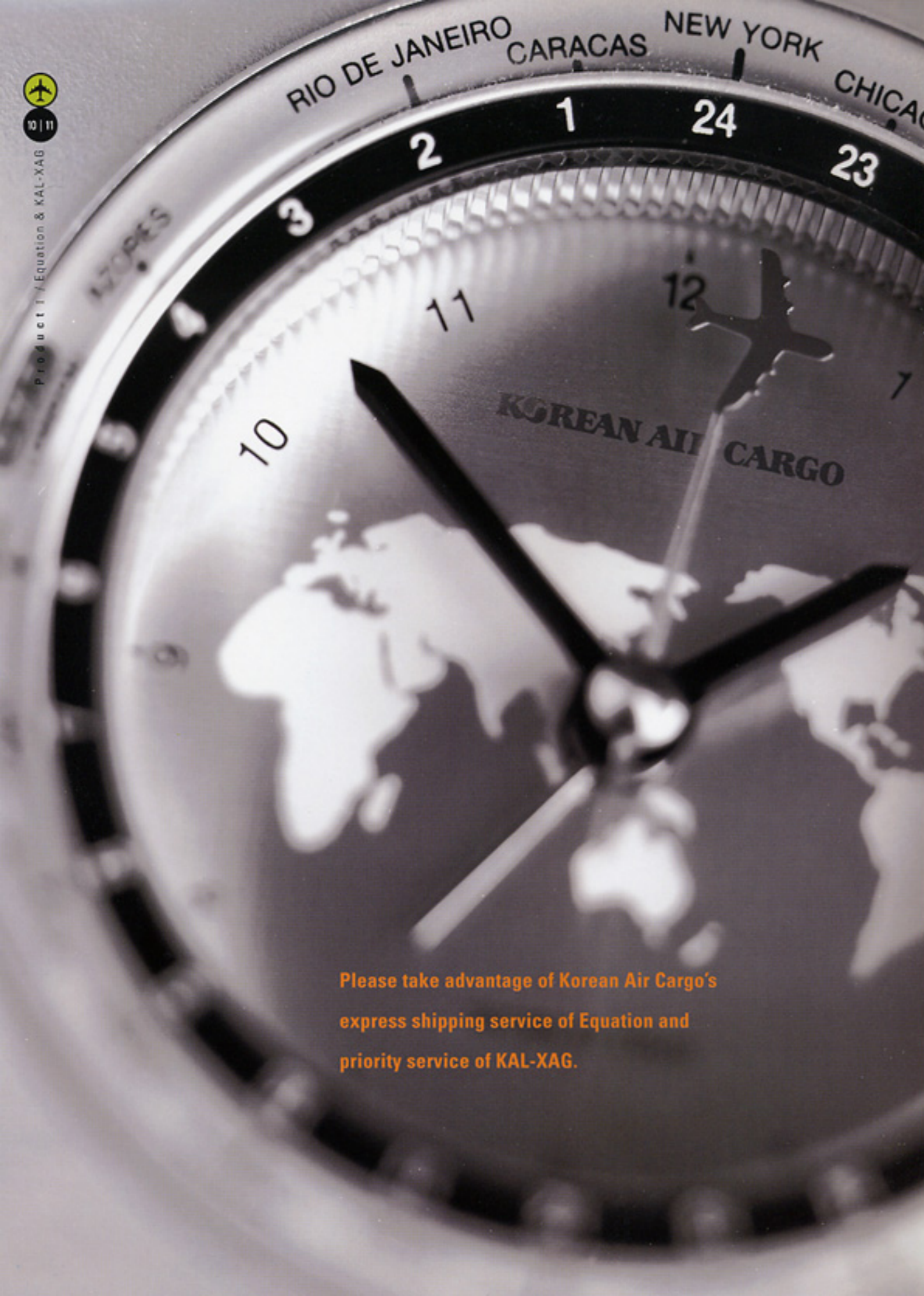


Los Angeles International Airport



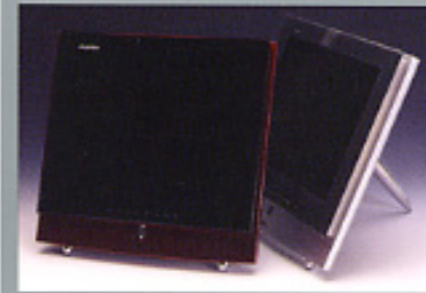
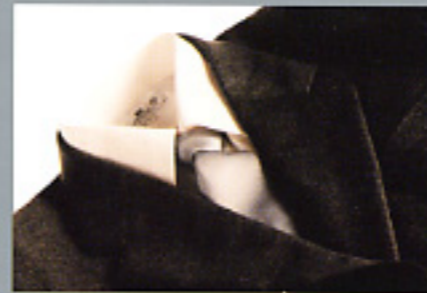
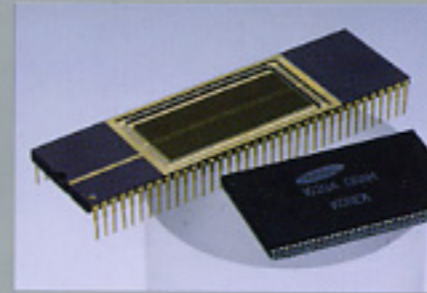
John F. Kennedy International Airport in New York





Please take advantage of Korean Air Cargo's express shipping service of Equation and priority service of KAL-XAG.

New Solution in Speed



Equation - Immediate boarding

Equation is designed to move customers' small shipments in urgent delivery across the extended network of the SkyTeam Cargo. It accepts almost all commodities under 70kg per piece. Equation does not require reservation for shipment under 500kg. The latest acceptance time is 90 minutes before flight departure and delivery is ready 90 minutes after flight arrival. If shipments fail to arrive at destination as promised, freight charges will be refunded up to 100%. For the speediest and safe service, Equation shipments are handled through the exclusive acceptance counters and containers.

KAL-XAG - Guaranteed boarding

KAL-XAG focuses on the medium and large shipments with no limitation to the size and weight. KAL-XAG allows priority booking on the first available flight. Especially, space is always confirmed for small shipments, up to 500kg on a passenger flight, and up to 1,000kg on a freighter, within the KAL-XAG exclusive space allotment. The latest acceptance time is 120 minutes before flight departure and delivery is ready 180 minutes after flight arrival. If shipments are not flown as booked, freight charges will be refunded up to 50%. All Korean Air Cargo's on-line stations operate exclusive acceptance counters and handling procedures. KAL-XAG covers even perishables and dangerous goods, which are excluded from Equation service.

* SkyTeam Cargo is the largest global airline cargo alliance created by Aeromexico, Air France, CSA Czech Airlines, Delta Air Lines and Korean Air.



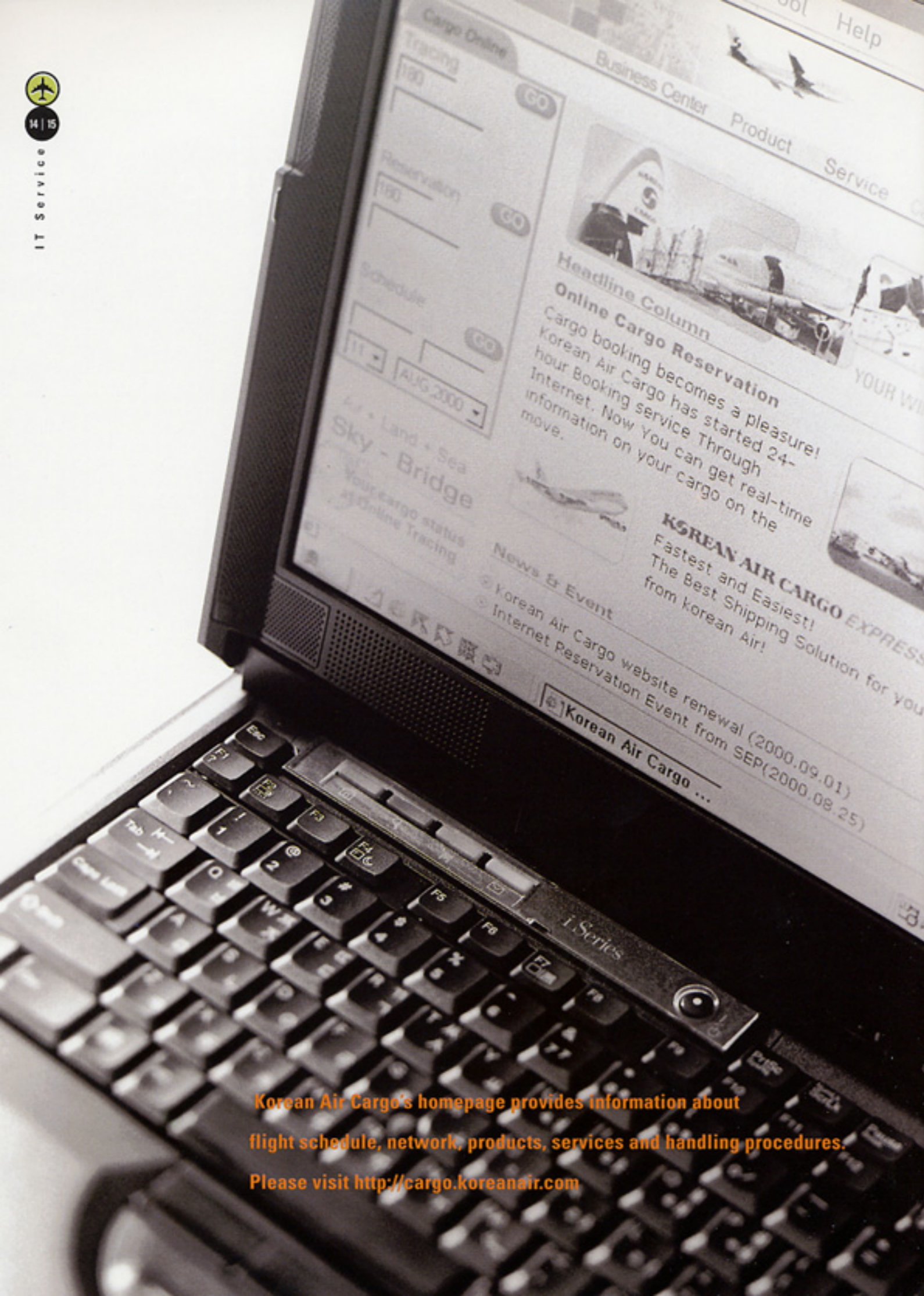
The combination of air, land and sea transportation provides our customers with reduced transit times and lower costs.

Sky Bridge - Air, Land and Sea service

This service, Korean Air Cargo's unique inter-modal transport service, links air transport with shipping and land trucking, offering transit time savings and cost-efficiencies to customers. Our Sky Bridge service allows shipments to move by ocean from China to Korea, and then to be air-freighted to North America or Europe, or vice versa. It only takes one week to complete the whole journey. So it takes less time than ocean shipping, and costs less than air transport.

Korean Air Cargo operates this inter-modal service, launched in 1991, in cooperation with our qualified partners.





Logistics Information Solutions



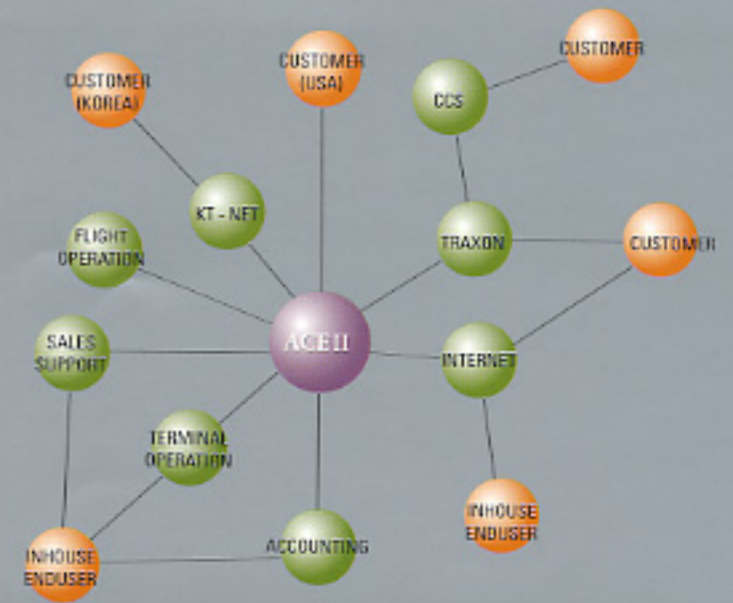
Korean Air Cargo's homepage provides on-line booking, schedule display, shipment tracking services and an on-line cargo campus. We are trying to offer wider and deeper information about the air cargo business through our homepage, which serves as an information source for people throughout the air cargo industry. The homepage is now available in Korean, English and Japanese.

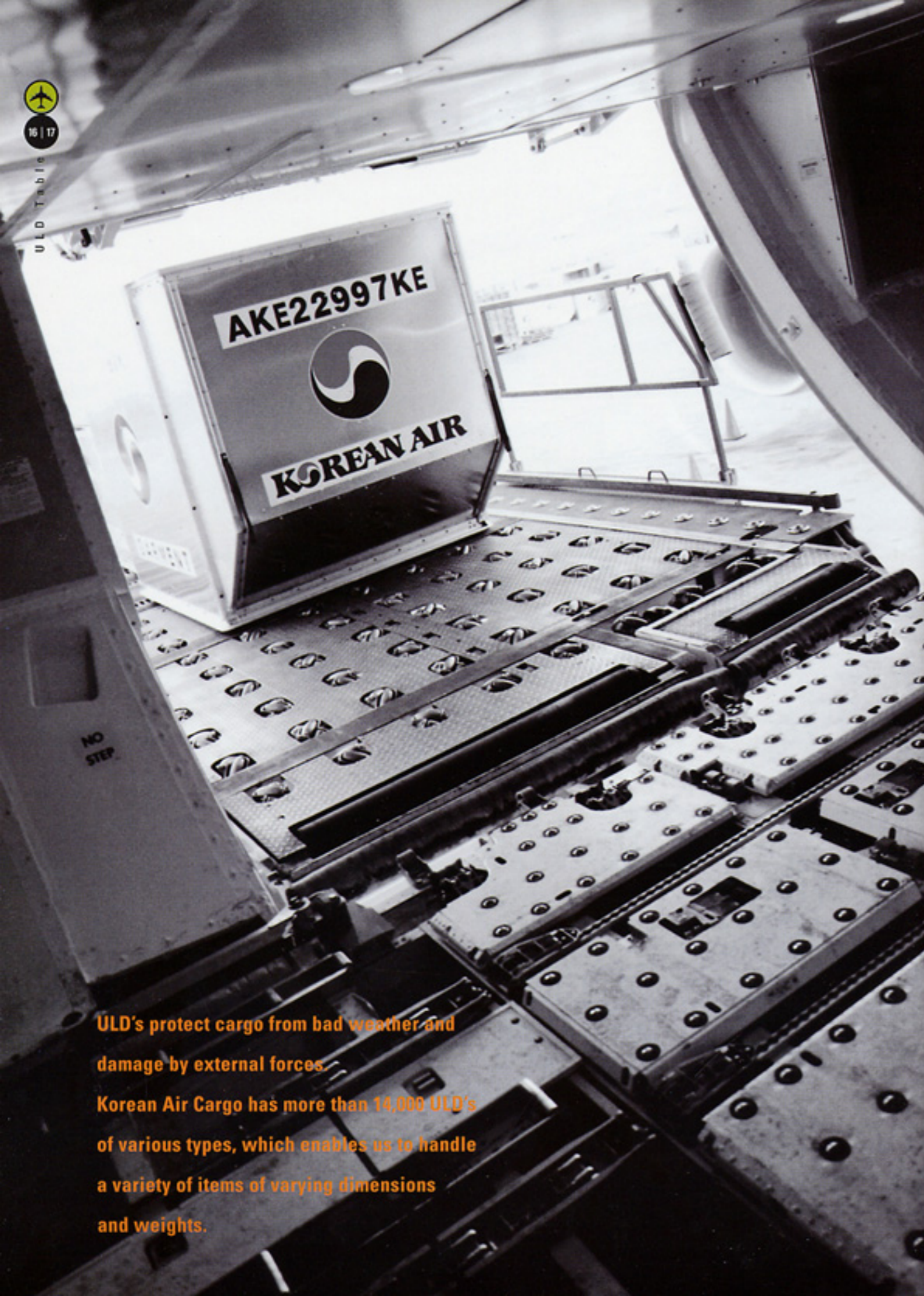
Customers can take advantage of various tracking service. Korean Air Cargo provides WAP(Wireless Application Protocol) Tracking and e-mail Tracking worldwide, and Mobile Tracing in Korea through cellular phone.

Korean Air Cargo uses the ACEII system, enabling us to exchange real-time transaction information with other airlines, customs systems and Traxon members around the world. (Traxon is a worldwide air cargo reservation and information system between carriers and freight forwarders).



Korean Air Cargo's homepage provides information about flight schedule, network, products, services and handling procedures. Please visit <http://cargo.koreanair.com>





ULD (Unit Load Device) Information

96" Pallet (PMC)



Max Capacity : 6,804 kg General Cargo

LD3 Garment Container (AKE)



Max Capacity : 1,588 kg General Cargo, Baggage
⊗ Lower Deck Only

LD3 Kooltainer (RKN)



Max Capacity : 1,588 kg Temperature-sensitive cargo
⊗ Lower Deck Only

88" Pallet (P1P, PAG)



Max Capacity : 6,033 kg General Cargo

LD6 Container (ALF)



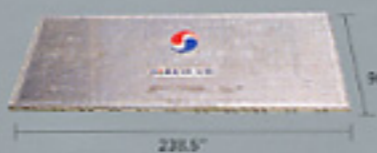
Max Capacity : 3,175 kg General Cargo, Baggage
⊗ Lower Deck Only

LD9 Refrigerated Container (RAP)



Max Capacity : 6,033 kg Perishable Cargo
⊗ Lower Deck Only

20FT Pallet (P7E, PGE)



Max Capacity : 13,608 kg Long, Bulky & Heavy Cargo
⊗ Main Deck Only

GM1 Container (AMA)



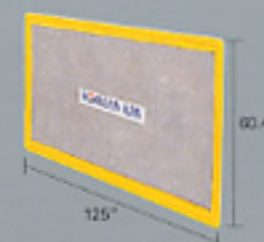
Max Capacity : 6,804 kg Garment
⊗ B747F Main Deck Only

LD9 Container (AAP)



Max Capacity : 6,033 kg General Cargo, Baggage
⊗ Lower Deck Only

Half Pallet (PLB)



Max Capacity : 3,176 kg General Cargo
⊗ Lower Deck Only

M1 Container (AMJ)



Max Capacity : 6,804 kg Garment
⊗ MD11F Main Deck Only

Horse Stall (HMA)



Max Capacity : 2,665 kg Horses
⊗ B747F Main Deck Only

ULD's protect cargo from bad weather and damage by external forces.

Korean Air Cargo has more than 14,000 ULD's of various types, which enables us to handle a variety of items of varying dimensions and weights.

World's Largest Capacity

Holder on Trans-Pacific Routes



Korean Air Cargo operates to-and-from most major destinations in Asia, North America, Europe and Oceania, where most air cargo traffic is generated. Our large network of 69 cities in 25 countries enables us to provide more convenient schedules to our customers. Korean Air Cargo is the world's largest capacity holder on trans-pacific routes, our yearly cargo capacity for the year 2001 is 1.7 million tonnes including domestic routes and of this, the trans-pacific routes account for over 480,000 tonnes. We operate more than 40 freighters and 60 passenger flights weekly on trans-pacific routes. A web of inland trucking services, linking with off-line cities in North America, Europe and Japan, is devoted to moving our customers' shipments quickly and safely to their final destinations beyond on-line cities.

Trans-pacific Route



Asian Route



Oceania Route



European Route



Japan Route



**KOREA**

Jeju	(064)750-8511-3
Gwangju	(062)944-6077
Busan	(051)461-7111-6
Seoul	(02)756-0747
Daegu	(053)606-2081-3

CHINA

Beijing	(010)8453-8126-7
Hong Kong	(852)2733-7134
Qingdao	(0532)387-8574
Shanghai	(021)6275-9776
Shenyang	(024)8939-2963/5
Tianjin	(022)2339-4033

**THE AMERICAS**

Brazil	
Sao Paulo	(011)6445-6269-70
Canada	1-888-888-4525
Montreal	(514)631-0096/9886
Toronto	(905)672-7473/6
Vancouver	(604)276-9271

U.S.A.	1-888-888-4525
Anchorage	(907)248-8113
Atlanta	(404)763-0185
Boston	(617)884-5003
Chicago	(773)894-8030
Dallas	(972)574-1760
Denver	(303)342-5852/6
Honolulu	(808)836-0311
Houston	(281)821-9561
Los Angeles	(310)410-2000
New York	(718)632-5555
Portland	(503)288-8831
San Francisco	(650)742-9850
Washington, D.C.	(703)661-3482

**SOUTHEAST ASIA
OCEANIA**

Australia	
Brisbane	(07)3221-4883
Sydney	(02)9313-4188/4729

India	
Mumbai	(022)838-0013

Indonesia	
Jakarta	(021)550-3065

Malaysia	
Kuala Lumpur	(03)8787-4110/2/5
Penang	(04)644-2099

New Zealand	
Auckland	(09)256-8605-6
Christchurch	(03)365-5147-8

Philippines	
Manila	(02)550-5851

Singapore	
Singapore	(65)542-0685-7

Taiwan	
Taipei	(02)2518-0295

Thailand	
Bangkok	(02)267-0987/9

Vietnam	
Ho Chi Minh City	(08)824-2878-80

**EUROPE
MIDDLE EAST**

Austria	
Vienna	(01)596-8101

Belgium	
Brussels	(02)751-8085

Denmark	
Copenhagen	(45)32-512095

France	
Paris	(01)4862-6174-5

Germany	
Frankfurt	(069)69-50310

Italy	
Milan	(02)5830-6565
Rome	(06)6595-5730/5734

Netherlands	
Amsterdam	(020)405-9777

Russia	
Moscow	(095)956-1666

Switzerland	
Basel	(061)325-3335/4205
Zurich	(01)816-4008-9

U.K.	
London	(44)1784-265388

**JAPAN**

Aomori	(0177)32-3311
Baraki	(0473)27-0555
Fukuoka	(092)441-4104
Kagoshima	(099)227-3311
Nagoya	(052)583-1089
Niigata	(025)244-3311
Okayama	(086)221-3311
Osaka	(06)6263-8896
Sapporo	(011)210-3311
Tokyo	(03)5443-3377





We take care of your success.

Kim

180-6980 1233
OCEAN AIR